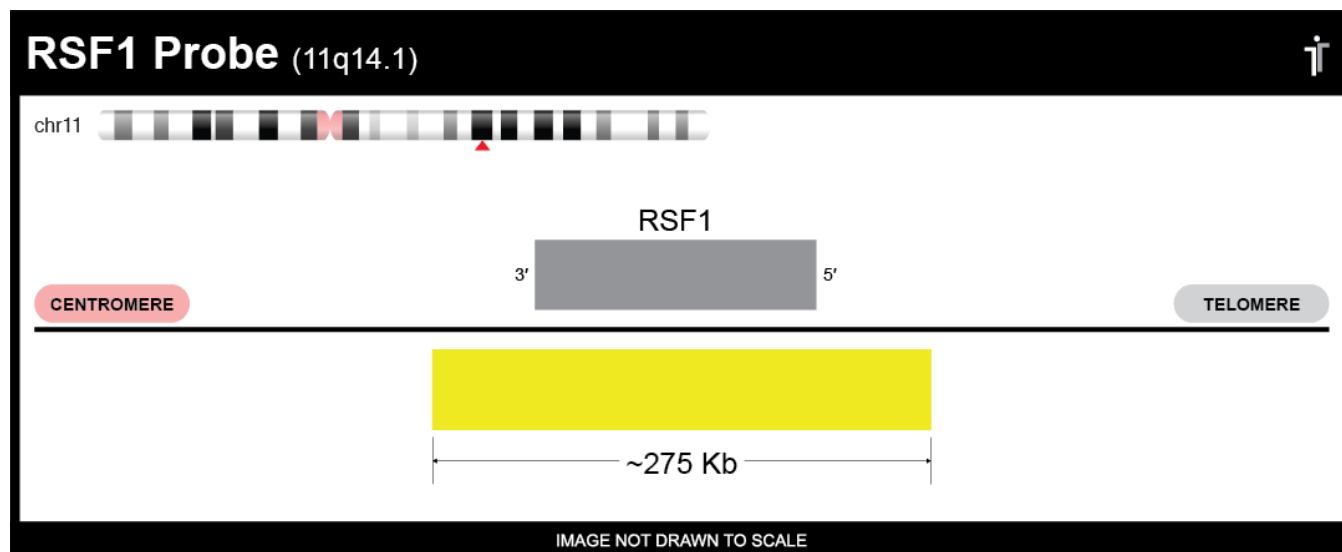


CERTIFICATE OF ANALYSIS

RSF1 Probe Set (Gold; 20 Test Kit; 40 µl)

Catalog # RSF1-20-GO



Fluorochrome	Localization
Gold	11q14.1

Lot Number: 2022-09-08

Expiration Date: September 2025

Product Description – Quality Declaration

The **RSF1 Probe Set** consists of DNA labeled in Spectrum Gold. The DNA probe set hybridizes to chromosome 11q14.1 in normal metaphase spreads and interphase nuclei.

Disclaimer

This probe set is for RESEARCH USE ONLY.

The probe set has NOT BEEN TESTED ON CLINICAL SAMPLES and is NOT VALIDATED.

Performance and analytical characteristics HAVE NOT been determined.

Chromosomal location based on GRCh37/hg19 build of human genome assembly.

Third party expiration studies were completed on concentrated probes only. We cannot guarantee the expiration date of probes mixed with buffer and stored reconstituted.