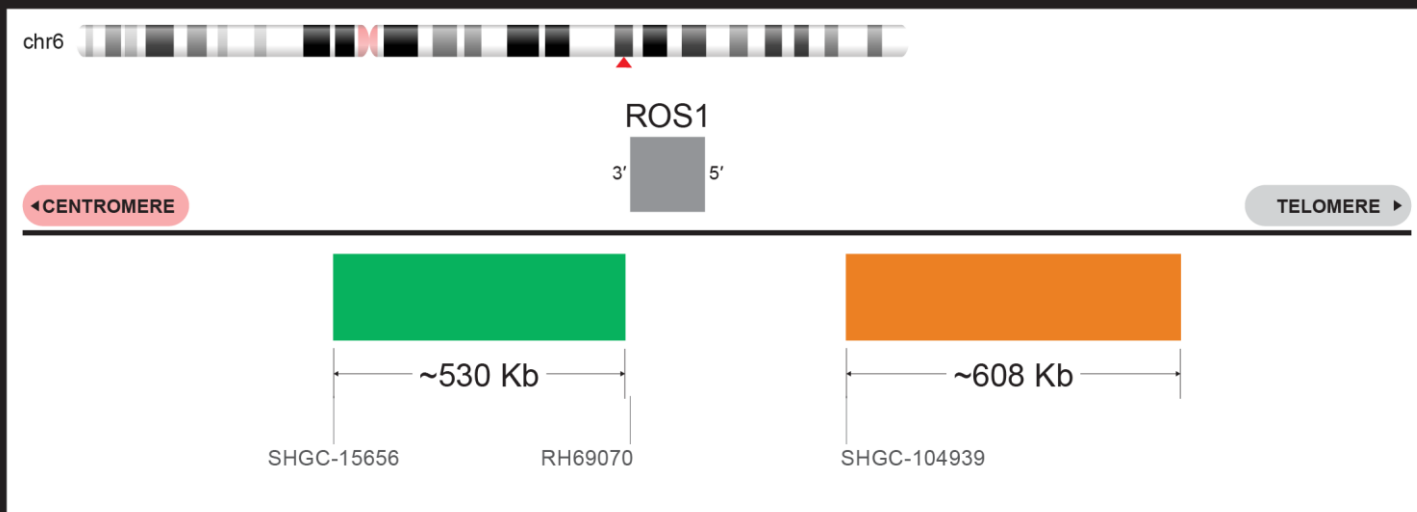


# CERTIFICATE OF ANALYSIS

ROS1 BA FISH Probe (Green/Orange; 10 Test Kit; 20 µl)

Catalog # ROS1BA-10-GROR

## ROS1 Break Apart Probe (6q22.1)



Fluorochrome	Localization
Green	6q22.1
Orange	6q22.1

Lot Number: 2021-11-23

Expiration Date: 2024-11-23

### Product Description – Quality Declaration

The **ROS1 BA FISH Probe** consists of DNA labeled in Spectrum Green and Spectrum Orange. The DNA probe set hybridizes to chromosome 6q22.1 in normal metaphase spreads and interphase nuclei.

### Disclaimer

This probe set is CE MARKED in certain countries.

This probe set is for RESEARCH USE ONLY elsewhere.

The probe set has NOT BEEN TESTED ON CLINICAL SAMPLES and is NOT VALIDATED.

Performance and analytical characteristics HAVE NOT been determined.

Chromosomal location based on GRCh37/hg19 build of human genome assembly.

\*\*\*Third party expiration studies were completed on concentrated probes only. We cannot guarantee the expiration date of probes mixed with buffer and stored reconstituted.\*\*\*

EC REP MedNet EC-REP GmbH Borkstrasse 10 48163 Münster Germany