

# CERTIFICATE OF ANALYSIS

REL DC FISH Probe (Orange/Green; 20 Test Kit; 40 µl)

Catalog # RELDC-20-ORGR

## REL Dual Color Probe (2p16.1/2q32.2)

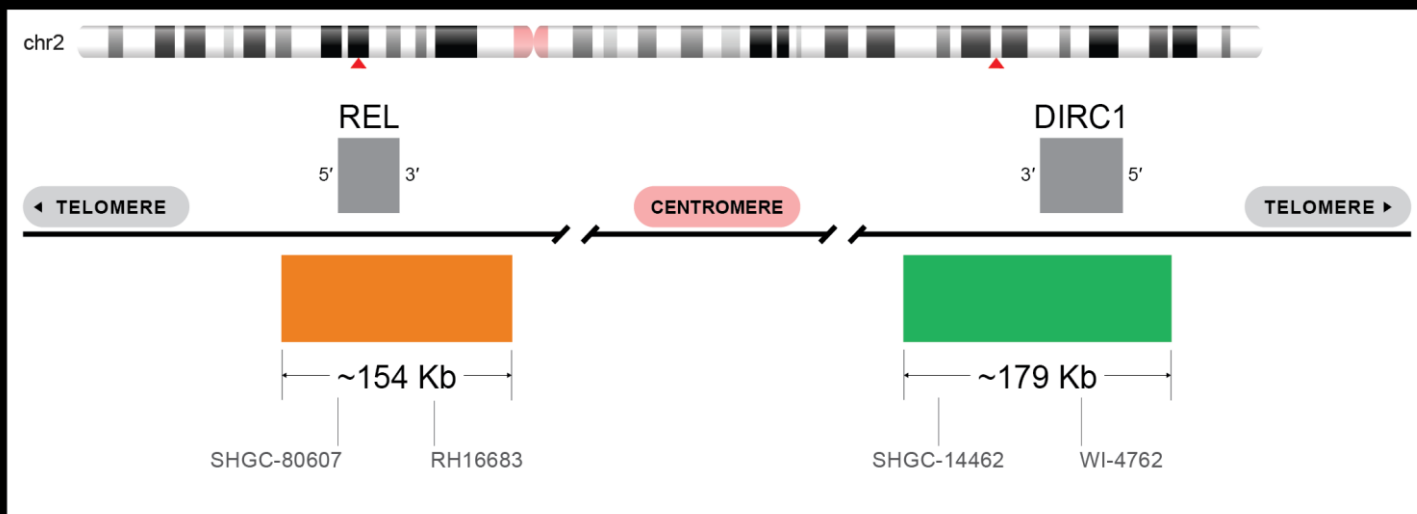


IMAGE NOT DRAWN TO SCALE

Fluorochrome	Localization
Orange	2p16.1
Green	2q32.2

Lot Number: 2022-06-29

Expiration Date: 2025-06-29

### Product Description – Quality Declaration

The **REL DC FISH Probe** consists of DNA labeled in Spectrum Orange and Spectrum Green. The DNA probe set hybridizes to chromosome 2p16.1 (Orange) and 2q32.2 (Green) in normal metaphase spreads and interphase nuclei.

### Disclaimer

This probe set is CE MARKED in certain countries.

This probe set is for RESEARCH USE ONLY elsewhere.

The probe set has NOT BEEN TESTED ON CLINICAL SAMPLES and is NOT VALIDATED.

Performance and analytical characteristics HAVE NOT been determined.

Chromosomal location based on GRCh37/hg19 build of human genome assembly.

\*\*\*Third party expiration studies were completed on concentrated probes only. We cannot guarantee the expiration date of probes mixed with buffer and stored reconstituted.\*\*\*



MedNet EC-REP GmbH Borkstrasse 10 48163 Münster Germany

