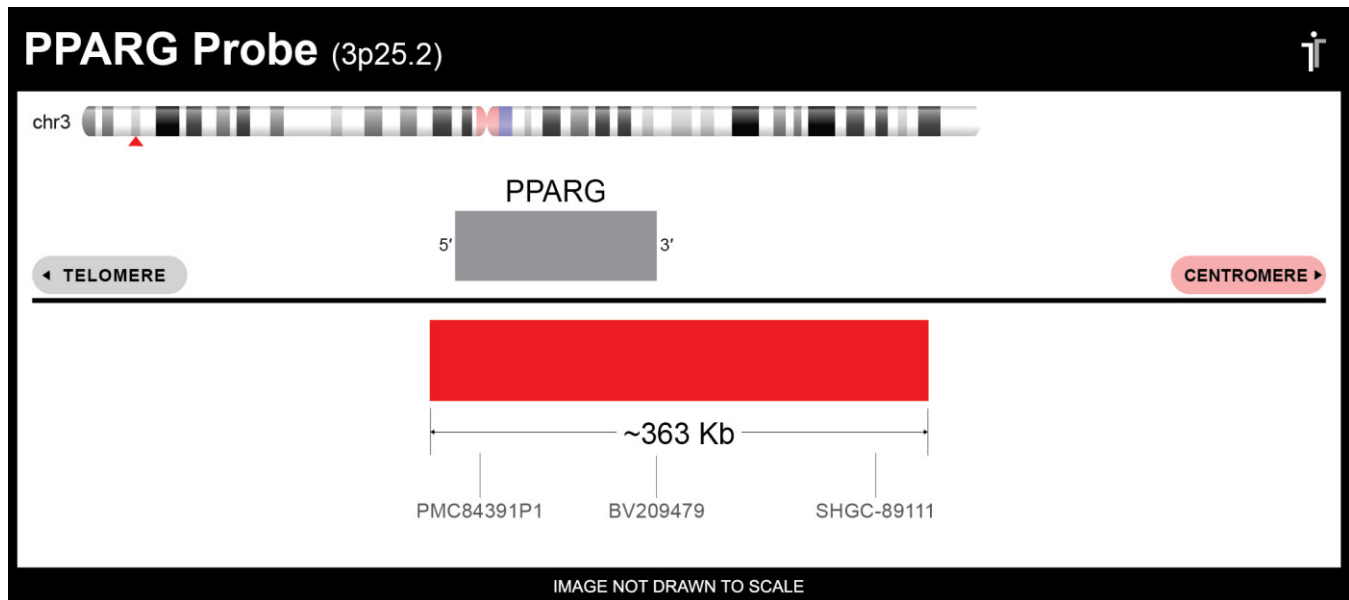


# CERTIFICATE OF ANALYSIS

**PPARG (RTU) Probe Set (Red; 20 Test Kit; 200 µl)**

**Catalog # PPARG-RTU-20-RE**



| Fluorochrome | Localization |
|--------------|--------------|
| Red          | 3p25.2       |

**Lot Number:** 2022-01-26

**Expiration Date:** January 2025

## Product Description – Quality Declaration

The **PPARG (RTU) Probe Set** consists of DNA labeled in Spectrum Red. The DNA probe set hybridizes to chromosome 3p25.2 in normal metaphase spreads and interphase nuclei.

## Disclaimer

This probe set is for RESEARCH USE ONLY.

The probe set has NOT BEEN TESTED ON CLINICAL SAMPLES and is NOT VALIDATED.

Performance and analytical characteristics HAVE NOT been determined.

Chromosomal location based on GRCh37/hg19 build of human genome assembly.

\*\*\*Third party expiration studies were completed on concentrated probes only. We cannot guarantee the expiration date of probes mixed with buffer and stored reconstituted.\*\*\*