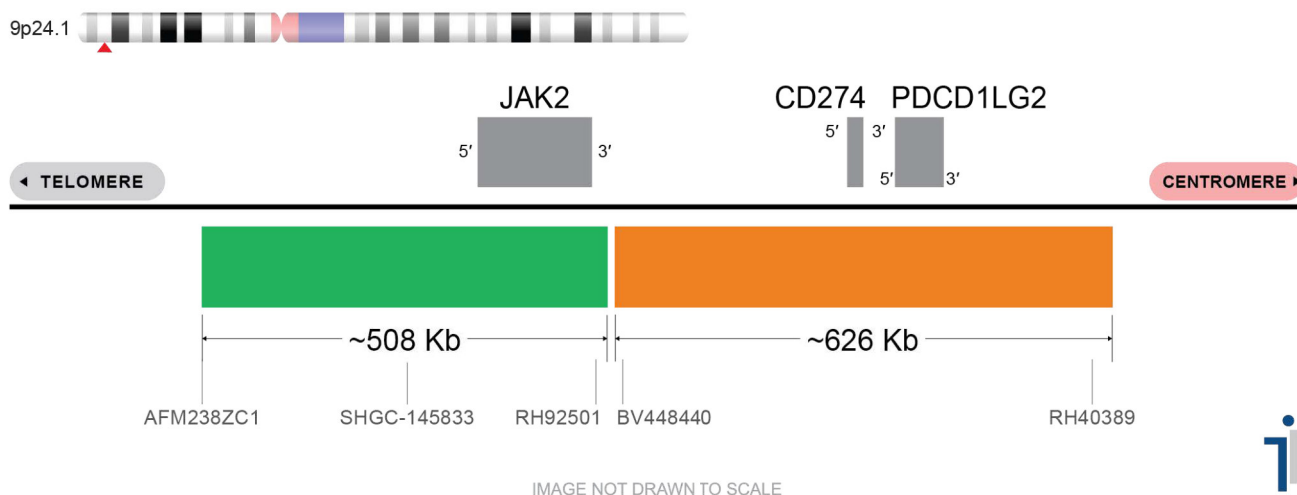


# CERTIFICATE OF ANALYSIS

**PD-L1/PD-L2/JAK2 Probe Set (Orange/Green; 20 Test Kit; 40 µl)**

**Catalog # PDL1-PDL2-JAK2-20-OG-R**



Fluorochrome	Localization
Orange	9p24.1
Green	9p24.1

**Lot Number:** 2025-01-08

**Expiration Date:** January 2027

## Product Description – Quality Declaration

The **PDL1/PDL2/JAK2 Probe Set** consists of DNA labeled in Spectrum Orange and Spectrum Green. The DNA probe set hybridizes to chromosome 9p24.1 in normal metaphase spreads and interphase nuclei.

## Disclaimer

This probe set is for RESEARCH USE ONLY.

The probe set has NOT BEEN TESTED ON CLINICAL SAMPLES and is NOT VALIDATED.

Performance and analytical characteristics HAVE NOT been determined.

Chromosomal location based on GRCh37/hg19 build of human genome assembly.

\*\*\*Third party expiration studies were completed on concentrated probes only. We cannot guarantee the expiration date of probes mixed with buffer and stoOrange reconstituted.\*\*\*