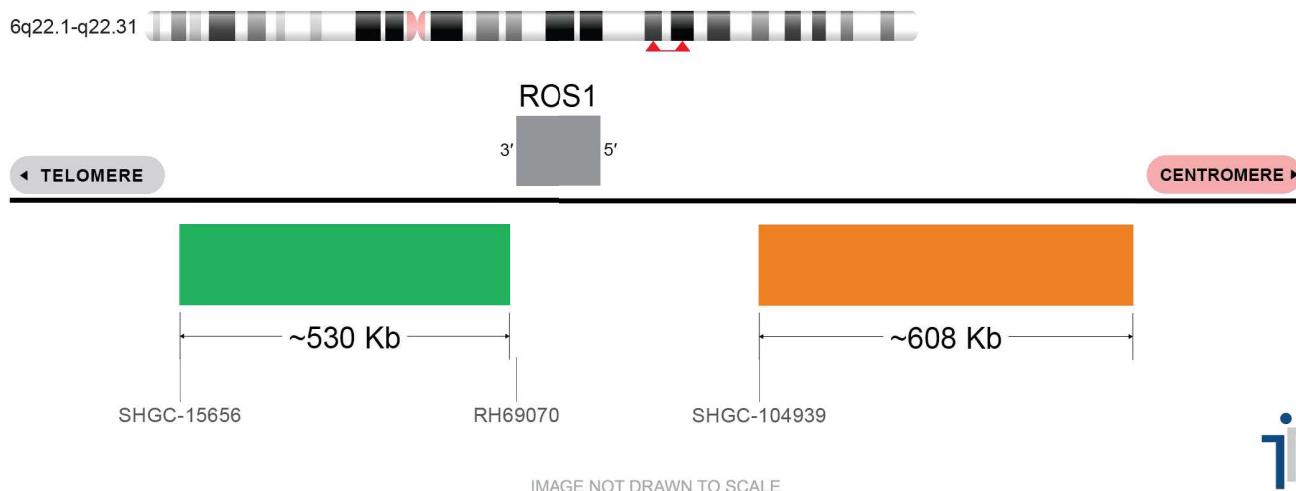


CERTIFICATE OF ANALYSIS

OSU-ROS1 BA FISH Probe (Green/Orange; 20 Test Kit; 40 µl)

Catalog # OSU-ROS1BA-20-GO-R



Fluorochrome	Localization
Green	6q22.1
Orange	6q22.1-q22.31

Lot Number: 2025-02-12

Expiration Date: February 2027

Product Description – Quality Declaration

The **OSU-ROS1 BA FISH Probe** consists of DNA labeled in Spectrum Green and Spectrum Orange. The DNA probe set hybridizes to chromosome 6q22.1-q22.31 in normal metaphase spreads and interphase nuclei.

Disclaimer

This probe set is for RESEARCH USE ONLY.

The probe set has NOT BEEN TESTED ON CLINICAL SAMPLES and is NOT VALIDATED.

Performance and analytical characteristics HAVE NOT been determined.

Chromosomal location based on GRCh37/hg19 build of human genome assembly.

Third party expiration studies were completed on concentrated probes only. We cannot guarantee the expiration date of probes mixed with buffer and stored reconstituted.