



**MAML2 BA Probe Set (Orange/Green; 20 Test Kit; 40 µl)**

**Catalog # MAML2BA-20-OG-R**

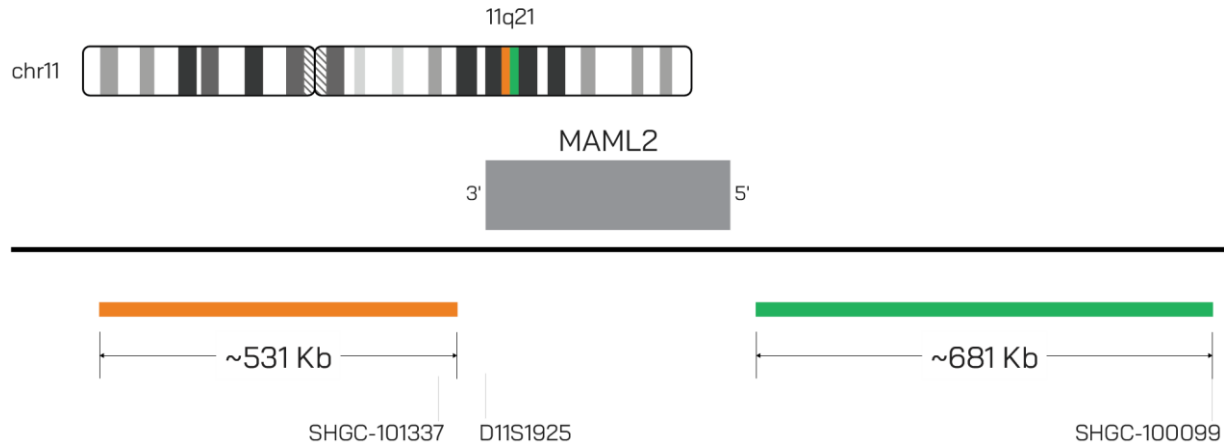


IMAGE NOT DRAWN TO SCALE

Fluorochrome	Localization
Orange	11q21
Green	11q21

**Lot Number:** 2025-08-13

**Expiration Date:** 2027-08-13

#### Product Description – Quality Declaration

The **MAML2 BA Probe Set** consists of DNA labeled in Spectrum Orange and Spectrum Green. The DNA probe set hybridizes to chromosome 11q21 in normal metaphase spreads and interphase nuclei.

#### Disclaimer

This probe set is for RESEARCH USE ONLY.

The probe set has NOT BEEN TESTED ON CLINICAL SAMPLES and is NOT VALIDATED.

Performance and analytical characteristics HAVE NOT been determined.

Chromosomal location based on GRCh37/hg19 build of human genome assembly.

Shelf-life is only guaranteed for concentrated probes stored according to the product label.