

KRAS/CON 12 Probe Set (Red/Green; 20 Test Kit; 200 µl)

Catalog # KRAS-CHR12-20-RG-R-S

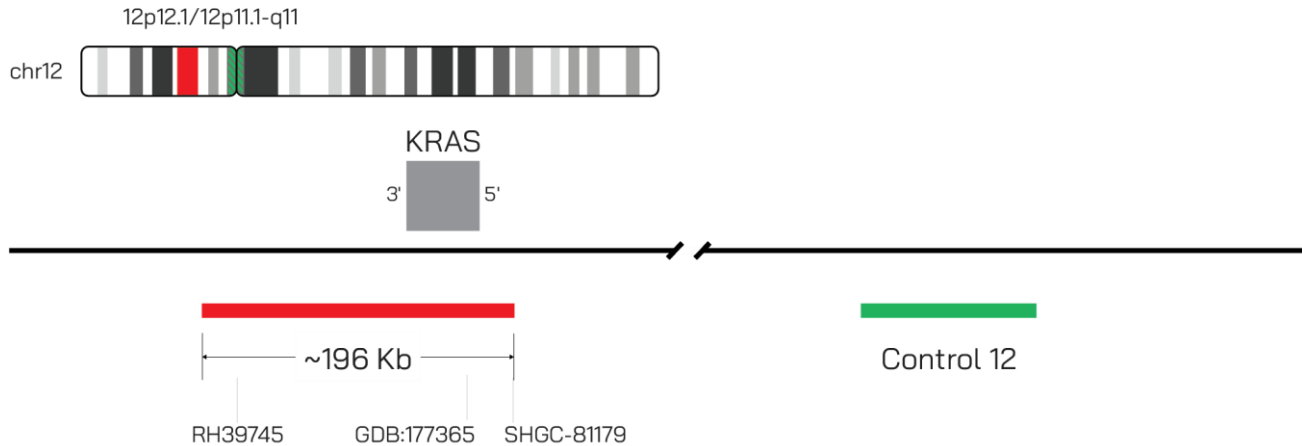


IMAGE NOT DRAWN TO SCALE

Fluorochrome	Localization
Red	12p12.1
Green	12p11.1-q11

Lot Number: 2025-08-13

Expiration Date: 2027-08-13

Product Description – Quality Declaration

The **KRAS/CON 12 Probe Set** consists of DNA labeled in Spectrum Red and Spectrum Green prediluted in SwiftFISH fast hybridization buffer. The DNA probe set hybridizes to chromosome 12p12.1 (Red) and 12p11.1-q11 (Green) in normal metaphase spreads and interphase nuclei.

Disclaimer

This probe set is for RESEARCH USE ONLY.

The probe set has NOT BEEN TESTED ON CLINICAL SAMPLES and is NOT VALIDATED.

Performance and analytical characteristics HAVE NOT been determined.

Chromosomal location based on GRCh37/hg19 build of human genome assembly.