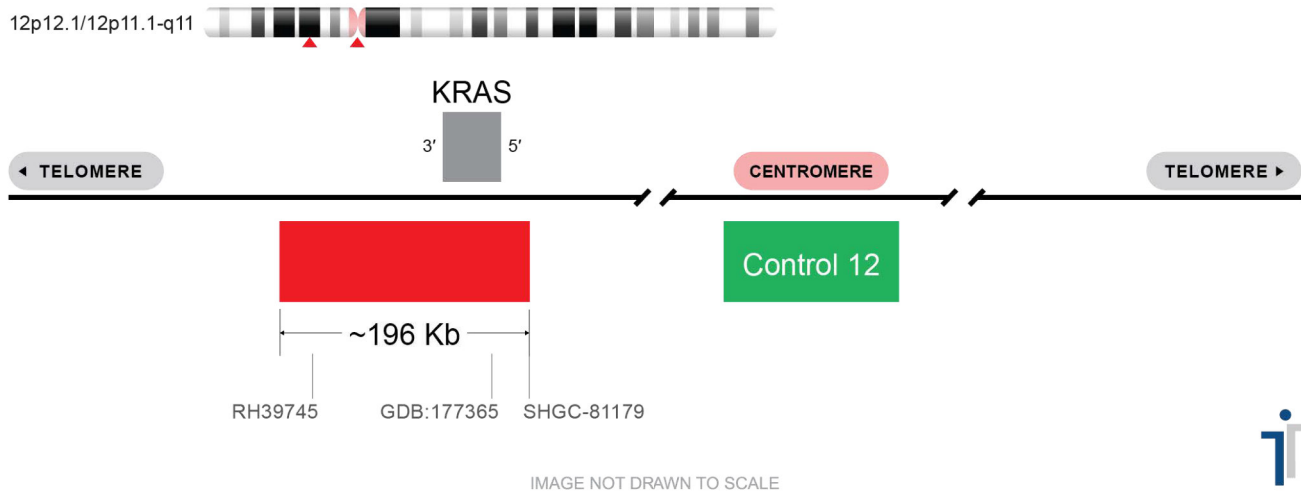


# CERTIFICATE OF ANALYSIS

**KRAS/Control 12 Probe Set (Red/Green; 20 Test Kit; 40 µl)**

**Catalog # KRAS-CHR12-20-RG-R**



Fluorochrome	Localization
Red	12p12.1
Green	12p11.1-q11

**Lot Number:** 2025-02-26

**Expiration Date:** February 2027

## Product Description – Quality Declaration

The **KRAS/Control 12 Probe Set** consists of DNA labeled in Spectrum Red and Spectrum Green. The DNA probe set hybridizes to chromosome 12p12.1 (Red) and 12p11.1-q11 (Green) in normal metaphase spreads and interphase nuclei.

## Disclaimer

This probe set is for RESEARCH USE ONLY.

The probe set has NOT BEEN TESTED ON CLINICAL SAMPLES and is NOT VALIDATED.

Performance and analytical characteristics HAVE NOT been determined.

Chromosomal location based on GRCh37/hg19 build of human genome assembly.

\*\*\*Third party expiration studies were completed on concentrated probes only. We cannot guarantee the expiration date of probes mixed with buffer and stored reconstituted.\*\*\*