



**KRAS/CON 12 Probe Set (Orange/Green; 20 Test Kit; 40 µl)**

**Catalog # KRAS-CHR12-20-OG-R**

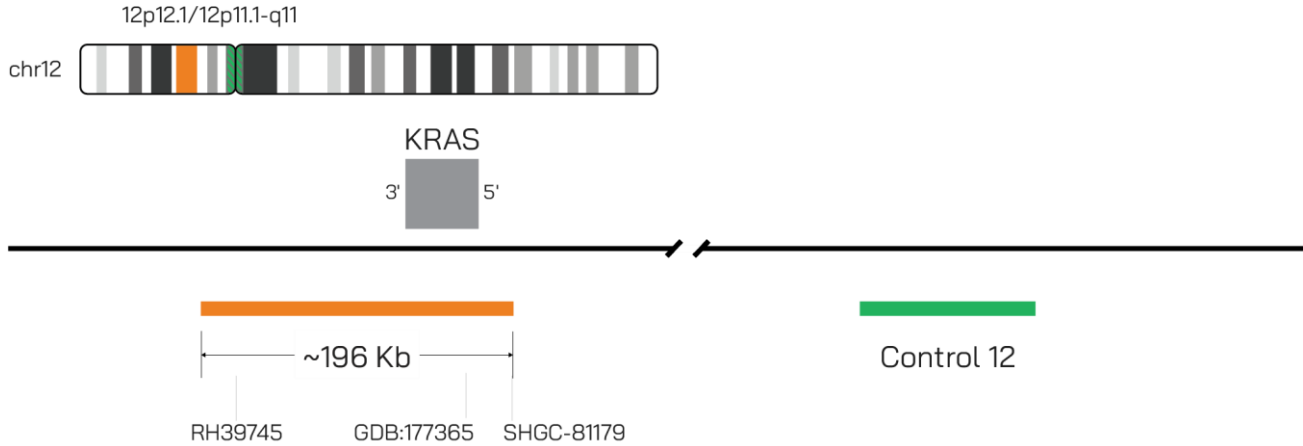


IMAGE NOT DRAWN TO SCALE

Fluorochrome	Localization
Orange	12p12.1
Green	12p11.1-q11

**Lot Number:** 2026-04-15

**Expiration Date:** 2028-04-15

**Product Description – Quality Declaration**

The **KRAS/CON 12 Probe Set** consists of DNA labeled in Spectrum Orange and Spectrum Green. The DNA probe set hybridizes to chromosome 12p12.1 (Orange) and 12p11.1-q11 (Green) in normal metaphase spreads and interphase nuclei.

**Disclaimer**

This probe set is for RESEARCH USE ONLY.

The probe set has NOT BEEN TESTED ON CLINICAL SAMPLES and is NOT VALIDATED.

Performance and analytical characteristics HAVE NOT been determined.

Chromosomal location based on GRCh37/hg19 build of human genome assembly.

Shelf-life is only guaranteed for concentrated probes stored according to the product label.