

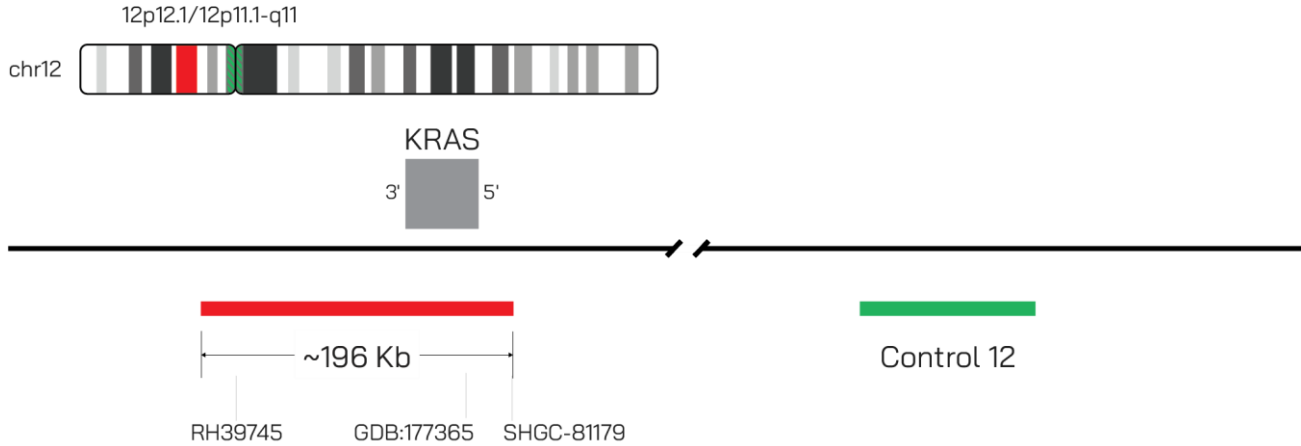
**KRAS/CON 12 Probe Set (Red/Green; 10 Test Kit; 100 µl)**
**Catalog # KRAS-CHR12-10-RG-R-S**


IMAGE NOT DRAWN TO SCALE

Fluorochrome	Localization
Red	12p12.1
Green	12p11.1-q11

**Lot Number:** 2025-10-15

**Expiration Date:** 2027-10-15

**Product Description – Quality Declaration**

The **KRAS/CON 12 Probe Set** consists of DNA labeled in Spectrum Red and Spectrum Green prediluted in SwiftFISH fast hybridization buffer. The DNA probe set hybridizes to chromosome 12p12.1 (Red) and 12p11.1-q11 (Green) in normal metaphase spreads and interphase nuclei. Cross hybridization issues are known to occur with CON 12.

**Disclaimer**

This probe set is for RESEARCH USE ONLY.

The probe set has NOT BEEN TESTED ON CLINICAL SAMPLES and is NOT VALIDATED.

Performance and analytical characteristics HAVE NOT been determined.

Chromosomal location based on GRCh37/hg19 build of human genome assembly.