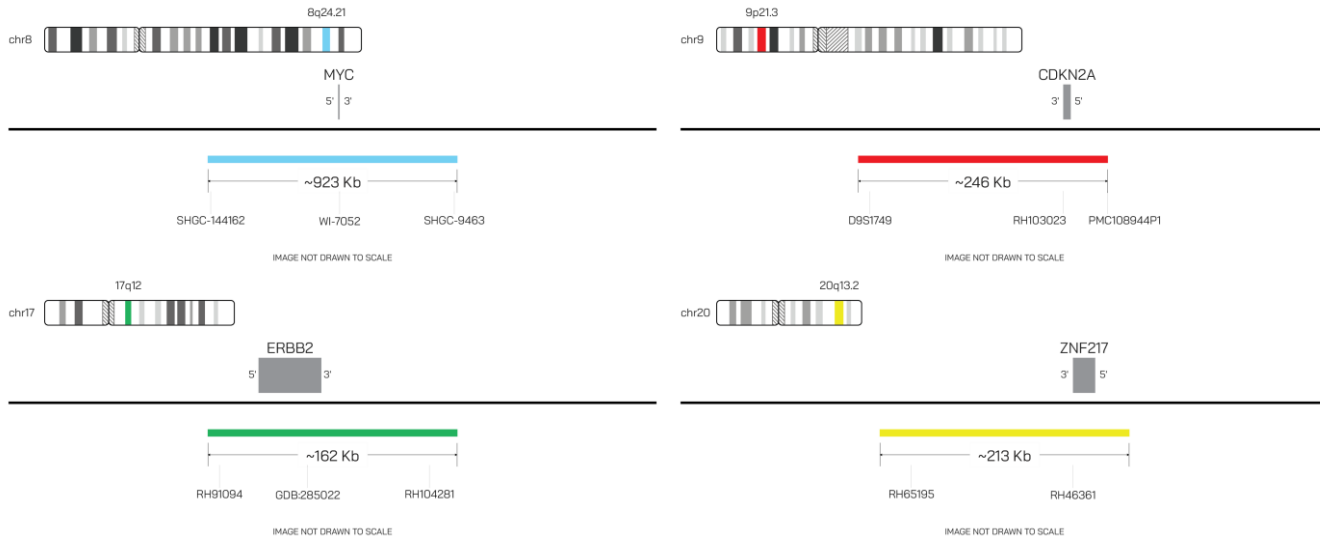


**EsoFISH Probe Set (Aqua/Red/Green/Gold; 10 Test Kit; 100 µl)**
**Catalog # ESOFISH-20-ARGK-R-S**


| Fluorochrome | Localization |
|--------------|--------------|
| Aqua         | 8q24.21      |
| Red          | 9p21.3       |
| Green        | 17q12        |
| Gold         | 20q13.2      |

**Lot Number:** 2026-04-29

**Expiration Date:** 2028-04-08

**Product Description – Quality Declaration**

The **EsoFISH Probe Set** consists of DNA labeled in Spectrum Aqua, Spectrum Red, Spectrum Green, and Spectrum Gold prediluted in SwiftFISH fast hybridization buffer. The DNA probe set hybridizes to chromosome 8q24.21 (Aqua), 9p21.3 (Red), 17q12 (Green), and 20q13.2 (Gold) in normal metaphase spreads and interphase nuclei.

**Disclaimer**

This probe set is for RESEARCH USE ONLY.

The probe set has NOT BEEN TESTED ON CLINICAL SAMPLES and is NOT VALIDATED.

Performance and analytical characteristics HAVE NOT been determined.

Chromosomal location based on GRCh37/hg19 build of human genome assembly.