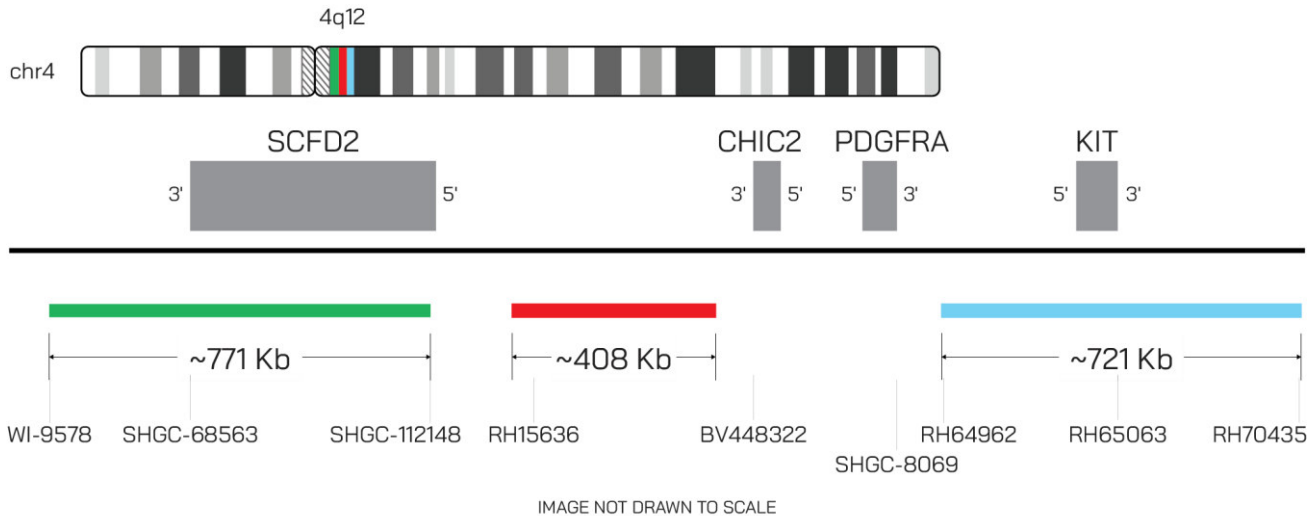


**delCHIC2 Probe Set (Green/Red/Aqua; 20 Test Kit; 200 µl)**

**Catalog # CHIC2-DEL-20-GRA-R-S**



Fluorochrome	Localization
Green	4q12
Red	4q12
Aqua	4q12

**Lot Number:** 2026-03-25

**Expiration Date:** 2028-03-25

### Product Description – Quality Declaration

The **delCHIC2 Probe Set** consists of DNA labeled in Spectrum Green, Spectrum Red, and Spectrum Aqua prediluted in SwiftFISH fast hybridization buffer. The DNA probe set hybridizes to chromosome 4q12 in normal metaphase spreads and interphase nuclei.

### Disclaimer

This probe set is for RESEARCH USE ONLY.

The probe set has NOT BEEN TESTED ON CLINICAL SAMPLES and is NOT VALIDATED.

Performance and analytical characteristics HAVE NOT been determined.

Chromosomal location based on GRCh37/hg19 build of human genome assembly.