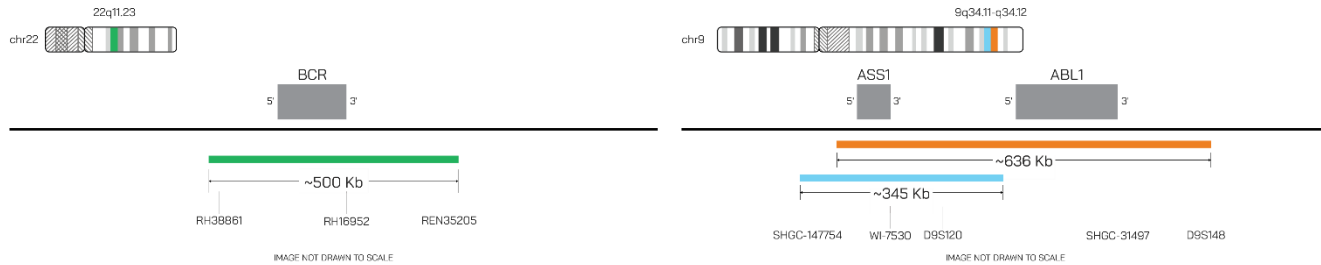


BCR/ABL1/ASS1 Probe Set (Green/Orange/Aqua; 20 Test Kit; 40 µl)

Catalog # BCR-ABL1-ASS1-20-GOA-R



Fluorochrome	Localization
Green	22q11.23
Orange	9q34.11-q34.12
Aqua	9q34.11-q34.12

Lot Number: 2025-06-11

Expiration Date: June 2027

Product Description – Quality Declaration

The **BCR/ABL1/ASS1 Probe Set** consists of DNA labeled in Spectrum Green, Spectrum Orange, and Spectrum Aqua. The DNA probe set hybridizes to chromosome 22q11.23 (Green) and 9q34.11-q34.12 (Orange and Aqua) in normal metaphase spreads and interphase nuclei.

Disclaimer

This probe set is for RESEARCH USE ONLY.

The probe set has NOT BEEN TESTED ON CLINICAL SAMPLES and is NOT VALIDATED.

Performance and analytical characteristics HAVE NOT been determined.

Chromosomal location based on GRCh37/hg19 build of human genome assembly.

Shelf-life is only guaranteed for concentrated probes stored according to the product label.