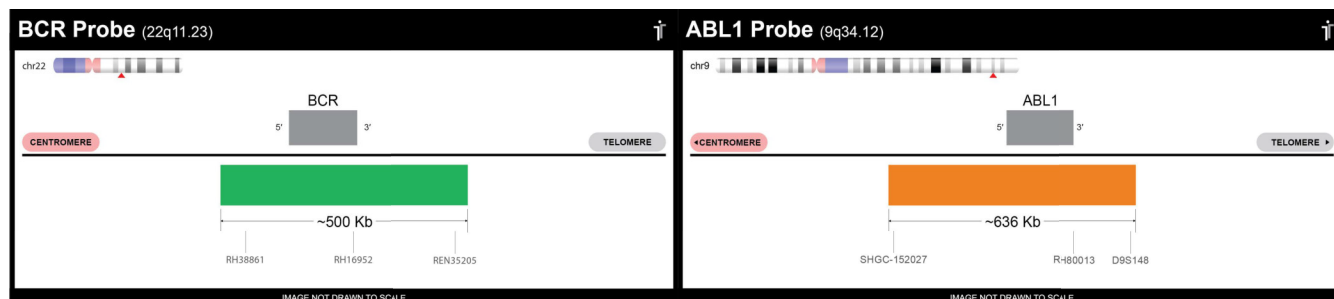


# CERTIFICATE OF ANALYSIS

**BCR/ABL1 Probe Set (Green/Orange; 10 Test Kit; 20 µl)**

**Catalog # BCR-ABL1-10-GROR**



Fluorochrome	Localization
Green	22q11.23
Orange	9q34.12

**Lot Number:** 2024-03-13

**Expiration Date:** March 2027

## Product Description – Quality Declaration

The **BCR/ABL1 Probe Set** consists of DNA labeled in Spectrum Green and Spectrum Orange. The DNA probe set hybridizes to chromosome 22q11.23 (Green) and 9q34.12 (Orange) in normal metaphase spreads and interphase nuclei.

## Disclaimer

This probe set is for RESEARCH USE ONLY.

The probe set has NOT BEEN TESTED ON CLINICAL SAMPLES and is NOT VALIDATED.

Performance and analytical characteristics HAVE NOT been determined.

Chromosomal location based on GRCh37/hg19 build of human genome assembly.

\*\*\*Third party expiration studies were completed on concentrated probes only. We cannot guarantee the expiration date of probes mixed with buffer and stored reconstituted.\*\*\*