

ASAP1 Probe Set (Red; 20 Test Kit; 40 µl)

Catalog # ASAP1-20-R-R

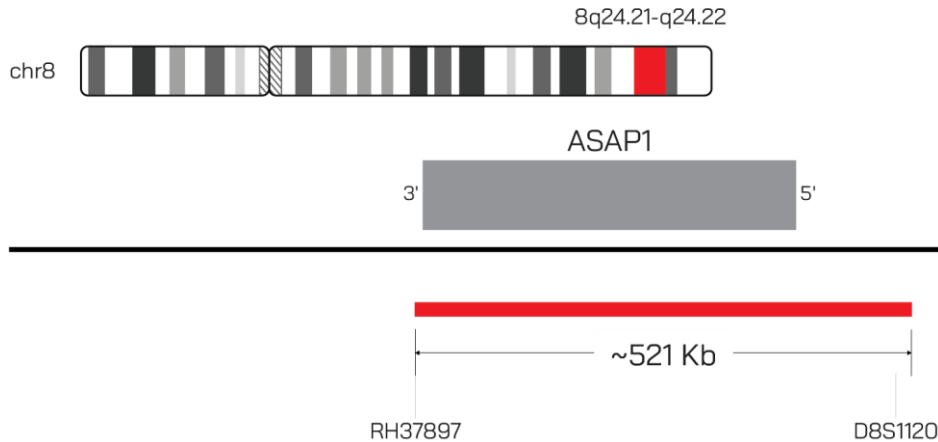


IMAGE NOT DRAWN TO SCALE

Fluorochrome	Localization
Red	8q24.21-q24.22

Lot Number: 2025-09-10

Expiration Date: 2027-09-10

Product Description – Quality Declaration

The **ASAP1 Probe Set** consists of DNA labeled in Spectrum Red. The DNA probe set hybridizes to chromosome 8q24.21-q24.22 in normal metaphase spreads and interphase nuclei.

Disclaimer

This probe set is for RESEARCH USE ONLY.

The probe set has NOT BEEN TESTED ON CLINICAL SAMPLES and is NOT VALIDATED.

Performance and analytical characteristics HAVE NOT been determined.

Chromosomal location based on GRCh37/hg19 build of human genome assembly.

Shelf-life is only guaranteed for concentrated probes stored according to the product label.