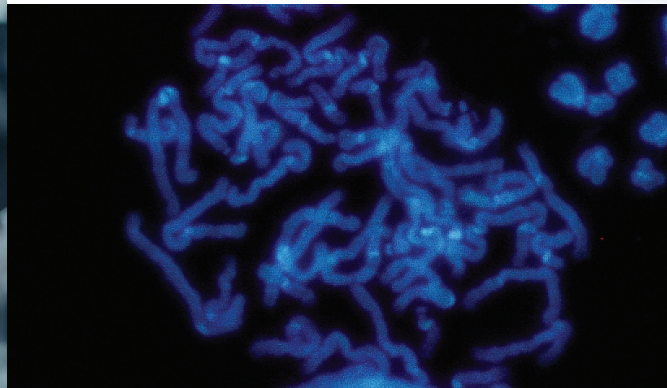


# Ancillary Reagents

Simplify & Standardize Your FISH Workflows with Empire Ancillary Reagents



## Complete Line of Ancillary Reagents

Empire Genomics is excited to introduce our latest ancillary reagents, designed to enhance your genomic research. Our new lineup includes DAPI with Antifade for superior fluorescence preservation, Hot & Cold Wash Buffers for optimized washing protocols, FFPE Pre-Treatment and Cyto Pre-Treatment Kits for efficient sample preparation and both SwiftFISH and standard Hybridization Buffers for streamlined hybridization processes. These innovative products are crafted to provide reliability and exceptional performance in your laboratory workflows.

- ▶ DAPI w/ Antifade
- ▶ Hot & Cold Wash Buffers
- ▶ FFPE Pre-Treatment Kit
- ▶ Cyto Pre-Treatment Kit
- ▶ Rapid & Standard Hybridization Buffers



## Pre-Treatment Kits

Proper pretreatment is crucial for the success of Fluorescence In Situ Hybridization (FISH) assays. Our FFPE and Cyto Pretreatment Kits ensure optimal sample preparation by enhancing probe accessibility and improving hybridization efficiency. These steps are vital for achieving accurate, reliable results in genomic mapping, cancer diagnostics, and genetic disease detection. Trust our pretreatment solutions to deliver the clarity and precision your FISH assays demand.

### FFPE Pre-Treatment Kit

The FFPE Pre-Treatment Kit is designed for optimal heat pretreatment and digestion of formalin-fixed, paraffin-embedded (FFPE) tissue slides. This comprehensive kit simplifies sample preparation, ensuring effective tissue digestion and high-quality results for your genomic research and Laboratory Developed Tests (LDT).

Product Details		
Application & Volume	Tissue Based FISH and CISH, 25 Tests	
Kit Components	Size	Concentration
Pretreatment Solution	250 ml	10mM Citric Acid
Wash Buffer	250 ml	2 x SSC
Protease Buffer	250 ml	0.01N HCl
Protease	5 x 20mg	Pepsin solid

### Cyto Pre-Treatment Kit

Empire Genomics Cyto Pre-Treatment Kit is designed for the efficient digestion of thin prep urine slides, ensuring optimal sample quality for cytogenetic analysis. This kit simplifies the preparation process, delivering consistent and high-quality results for your genomic research and Laboratory Developed Tests (LDT).

Product Details		
Application & Volume	Urine Based FISH and CISH, 25 Tests	
Kit Components	Size	Concentration
Wash Buffer	250 ml	2 x SSC
Protease Buffer	250 ml	0.01N HCl
Protease	5 x 40mg	Pepsin solid

## Buffers

Buffers play a critical role in the success of Fluorescence In Situ Hybridization (FISH) assays by ensuring proper probe hybridization and signal clarity. Our comprehensive range includes Hot and Cold Wash Buffers for thorough sample washing, Rapid Hybridization Buffer (SwiftFISH) for expedited hybridization processes, and Standard Hybridization Buffer for consistent and reliable results. These buffers are designed to enhance the performance of your FISH assays, providing the precision and accuracy needed for advanced genomic research and diagnostics.

### Hot & Cold Wash Buffers Top Seller

Our Wash Buffer I (0.3% Igepal/0.4x SSC) and Wash Buffer II (0.1% Igepal/2x SSC) are sterile solutions intended for use as a post-hybridization hot and cold wash. Suitable for washing both FISH and CISH slides, this product is shipped in a cubitainer and includes a spout for easy dispensing.

Product Details	
Volume	4L each

### SwiftFISH Hybridization Buffer Two Hour Turn-Around, Excellent Fluidity

Reduce your hybridization time from an overnight cycle to as little as two hours or run it overnight while maintaining the same level of precision and signal strength, with Empire Genomics SwiftFISH® rapid hybridization buffer. The SwiftFISH buffer has been tested on FFPE, Peripheral Blood, and Bone Marrow samples and is optimized to reduce signal background.

Product Details	
Volume	200ul / 20 Tests
Application	FISH and CISH

### Hybridization Buffer

Our Hybridization Buffer is engineered to ensure optimal binding conditions for your FISH and CISH assays, delivering consistent and reliable results. This high-quality buffer enhances probe hybridization efficiency, making it an essential component.

Product Details	
Volume	200ul / 20 Tests
Application	FISH and CISH

### DAPI w/ Antifade Kit Tech Preferred

Experience the next level of convenience and reliability in your fluorescence in situ hybridization (FISH) experiments with our Ready-to-Use DAPI with Antifade Solution. Designed to save you time and enhance your results, this solution is ready straight from the bottle, eliminating the need for any preparation steps.

Product Details	
Volume	500ul / 50 Tests
Concentration	125ng/ml



# Ordering Information

Product	Category	SKU	Intended Use	Market
DAPI w/ Antifade	Counterstain	DAPI-0125	RUO	Global
Wash Buffer 1	Post Hybridization Hot Wash	WASH1-004L	RUO	Global
Wash Buffer 2	Post Hybridization Cold Wash	WASH2-004L	RUO	Global
FFPE Pre-Treatment Kit	Pre-Treatment	FPTK-001	RUO	Global
Cyto Pre-Treatment Kit	Pre-Treatment	CPTK-002	RUO	Global
SwiftFISH Buffer	Rapid Hybridization Buffer	SwiftFISH-Buffer	RUO	Global
Hybridization Buffer	Hybridization Buffer	Hyb-Buffer	RUO / CE	Global



[www.empiregenomics.com](http://www.empiregenomics.com)

For In Vitro Use Only | For Research Use Only | Not For Diagnostic Use



800.715.5880  
3370 Walden Avenue Suite 114  
Depew, NY 14043

[www.empiregenomics.com](http://www.empiregenomics.com)

ANC100  
072524