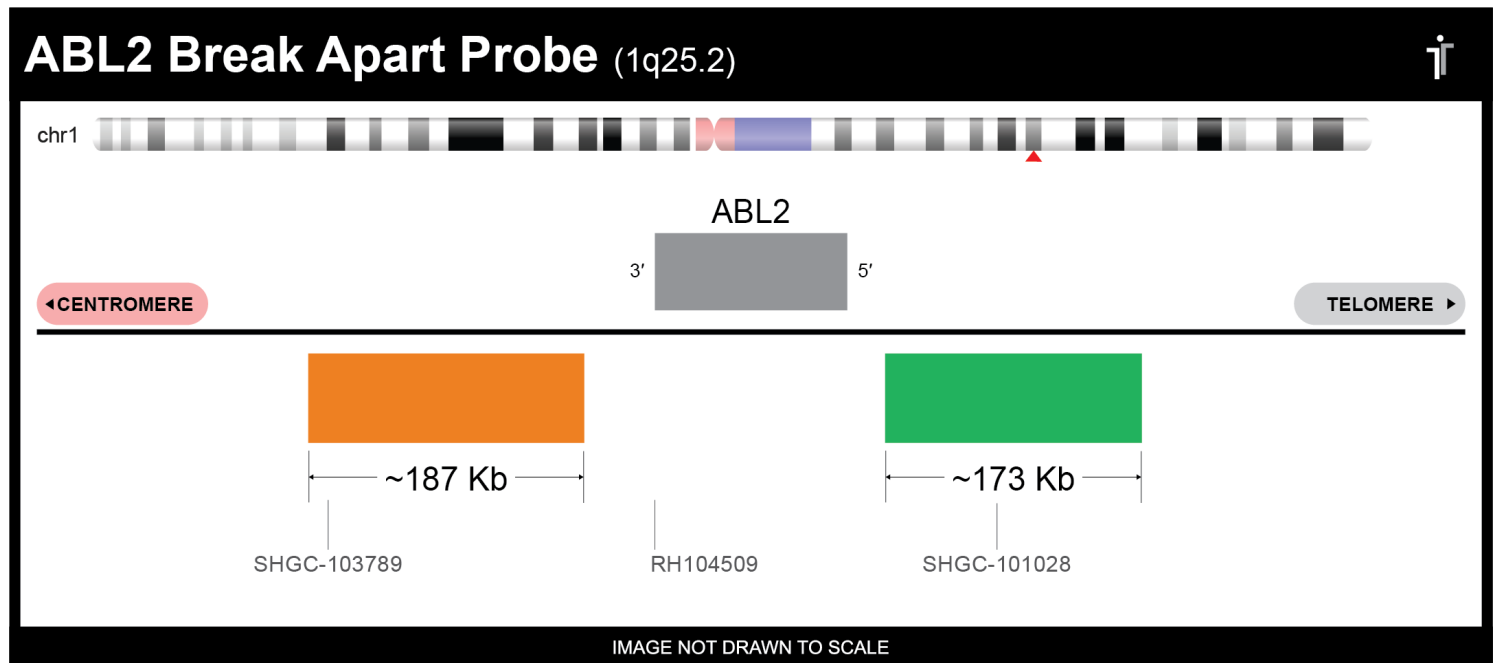


Our ABL2 break apart probe is designed to detect ABL2 translocations. The probe comes labeled in orange and green, but can be customized to meet your needs.

Gene Background: ABL2 belongs to the same gene family of Abelson nonreceptor tyrosine kinases as ABL1. It regulates actin rearrangement via phosphorylation of cytoskeleton-remodeling proteins, including MYH10, CTTN, and TUBB. ABL2 rearrangements have been identified in several leukemias, often resulting in fusions with ETV6.

Source: [GeneCards.org](https://www.genecards.org/)



SKU	Test Kits	Buffer	Dye	Color	Price
ABL2BA-20-ORGR	20 (40 µL)	200 µL	Orange	Green	\$1,910.00
ABL2BA-20-GOGR	20 (40 µL)	200 µL	Yellow	Green	\$2,292.00
ABL2BA-20-GROR	20 (40 µL)	200 µL	Green	Orange	\$2,292.00
ABL2BA-20-REGR	20 (40 µL)	200 µL	Red	Green	\$2,292.00
ABL2BA-20-GRRE	20 (40 µL)	200 µL	Green	Red	\$2,292.00
ABL2BA-20-GRGO	20 (40 µL)	200 µL	Green	Yellow	\$2,292.00

Ordering Instructions:

To order the ABL2 Break Apart FISH Probe, visit

<https://www.empiregenomics.com/fish-probes/gene/ABL2+Break+Apart+FISH+Probe>

or contact our office at **(716) 856-3873**.

** For in vitro use only / CE marked in certain countries / RUO in US and other countries*