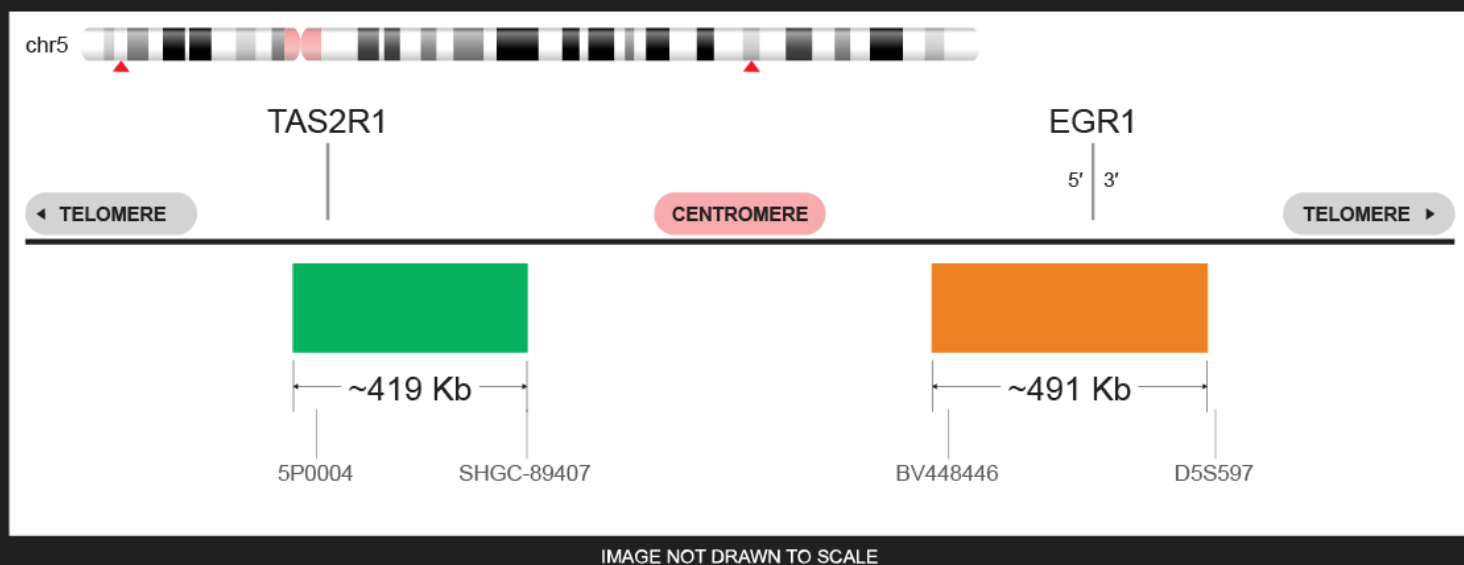


Our 5P5Q FISH probe is designed to detect deletions in the q arm of chromosome 5. The probe comes labeled in green and orange, but can be customized to meet your needs.

Gene Background: Myelodysplastic syndrome with 5q deletion was first identified in the 1970's.¹ It was the first chromosomal deletion to be associated with a specific hematologic phenotype.¹ Loss of 5q31 is common in both MDS and AML, and often occurs alongside additional cytogenetic aberrations.¹ Although the precise location of 5q deletion varies, the critical region of deletion is 5q31 in nearly all documented cases.²

del5q Probe (5p15.31/5q31.2)



SKU	Test Kits	Buffer	Dye Color	Price
5P5Q-20-GROR	20 (40 µL)	200 µL	● ●	\$1,910.00
5P5Q-20-GRRE	20 (40 µL)	200 µL	● ●	\$2,292.00

Ordering Instructions:

To order the 5P5Q FISH Probe, visit <https://www.empiregenomics.com/fish-probes/gene/5P5Q+FISH+Probe> or contact our office at (716) 856-3873.